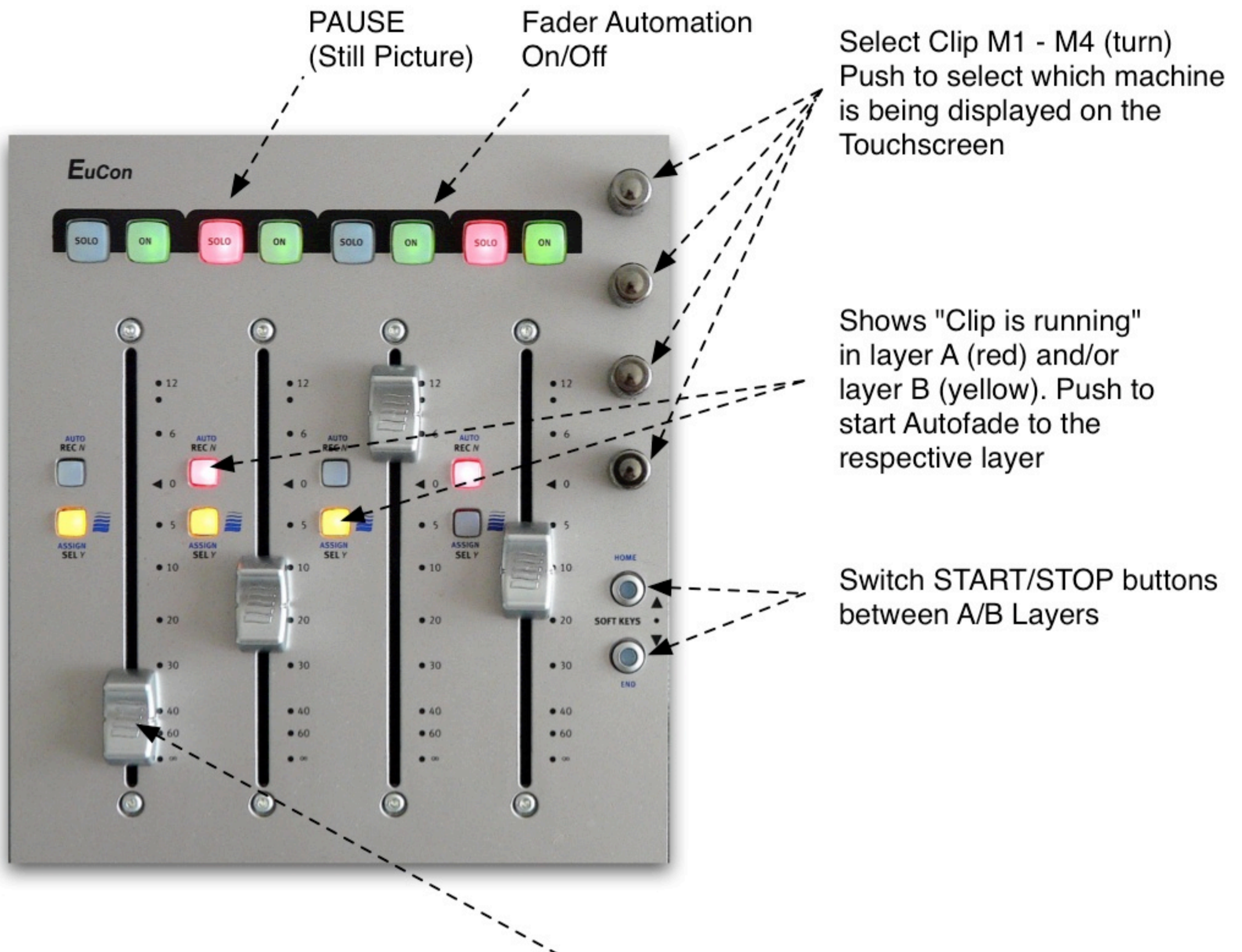


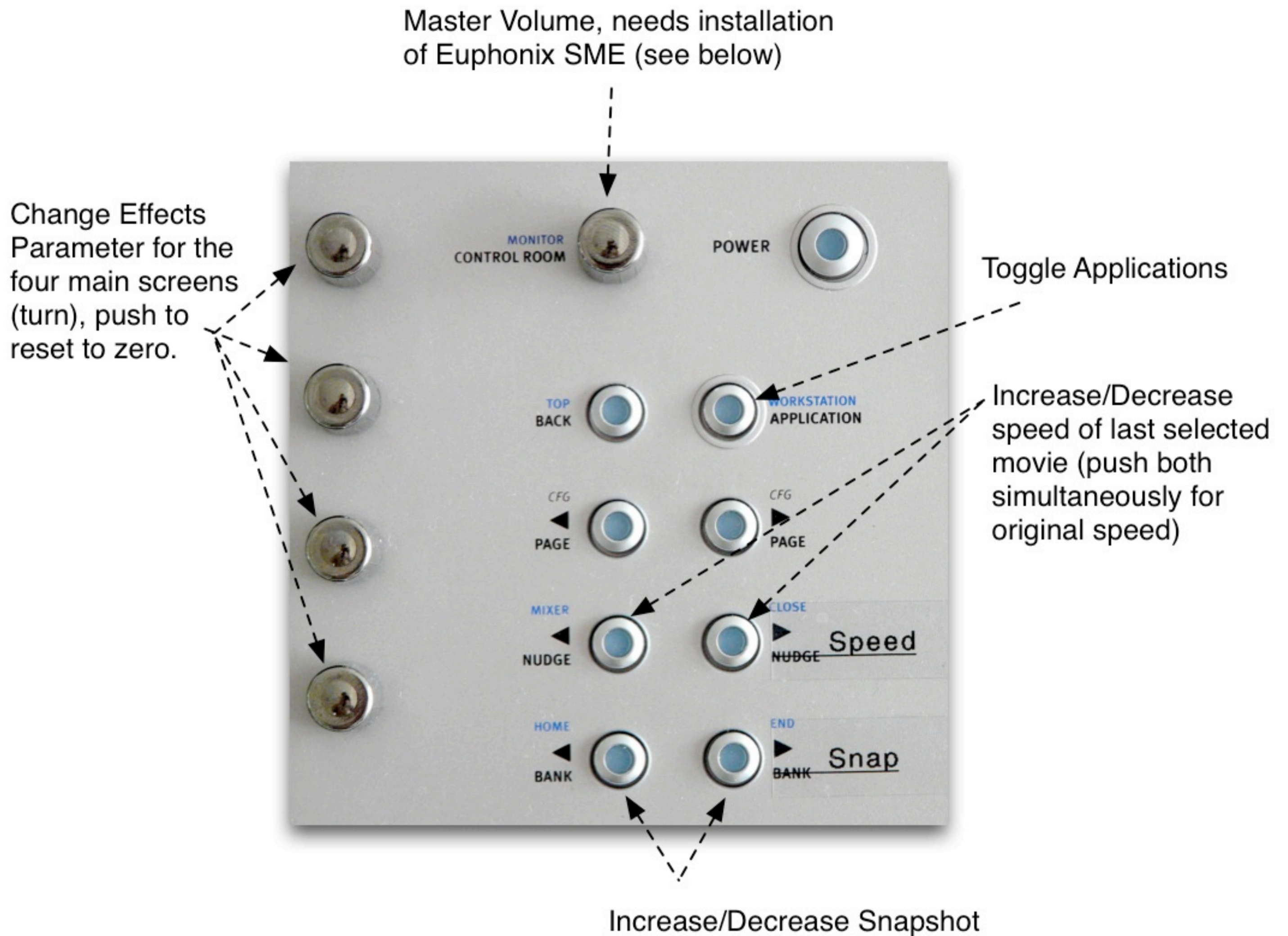
Euphonix MC Control Remote for TH-S VideoEngine3D



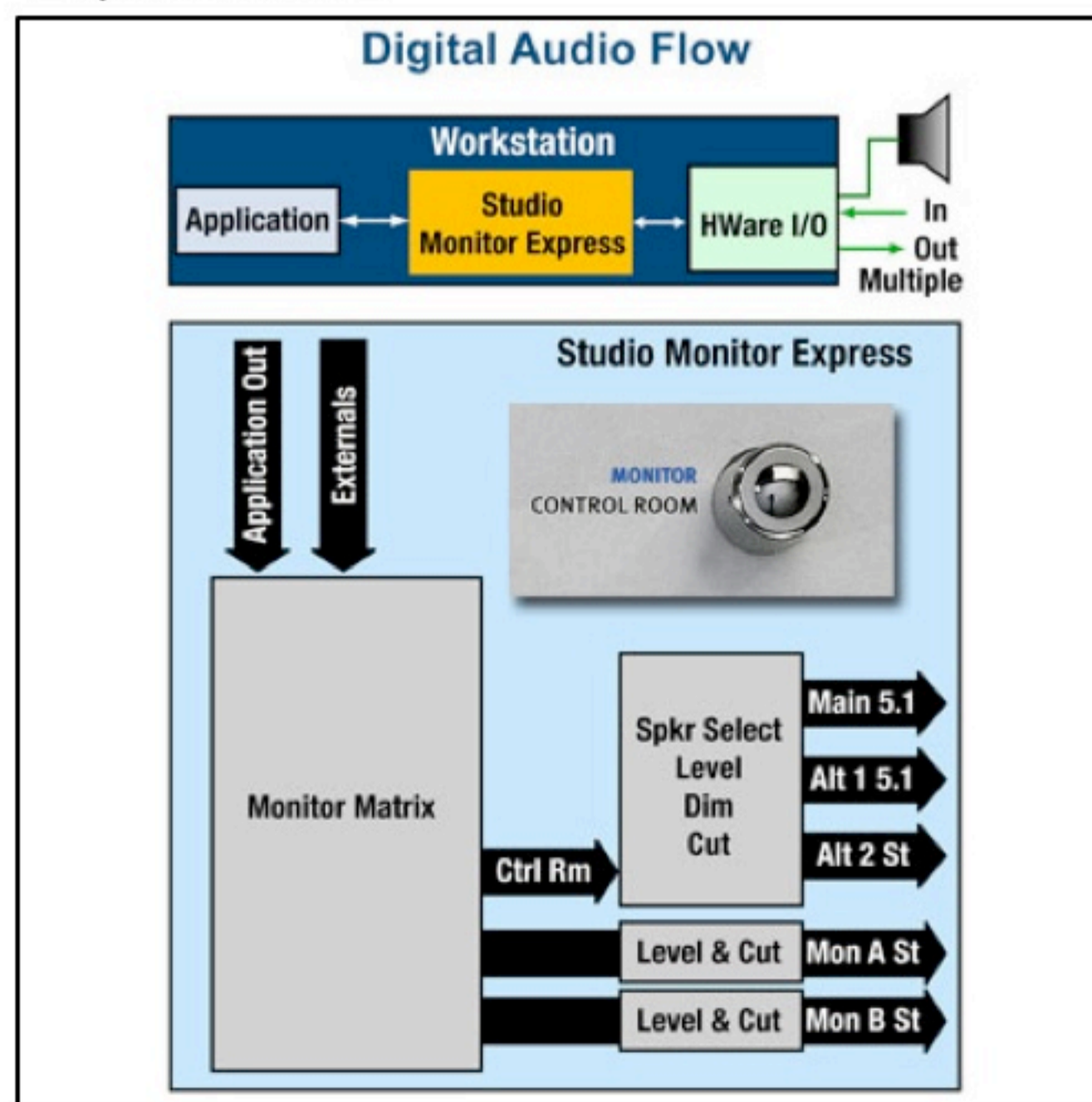
Fader Section



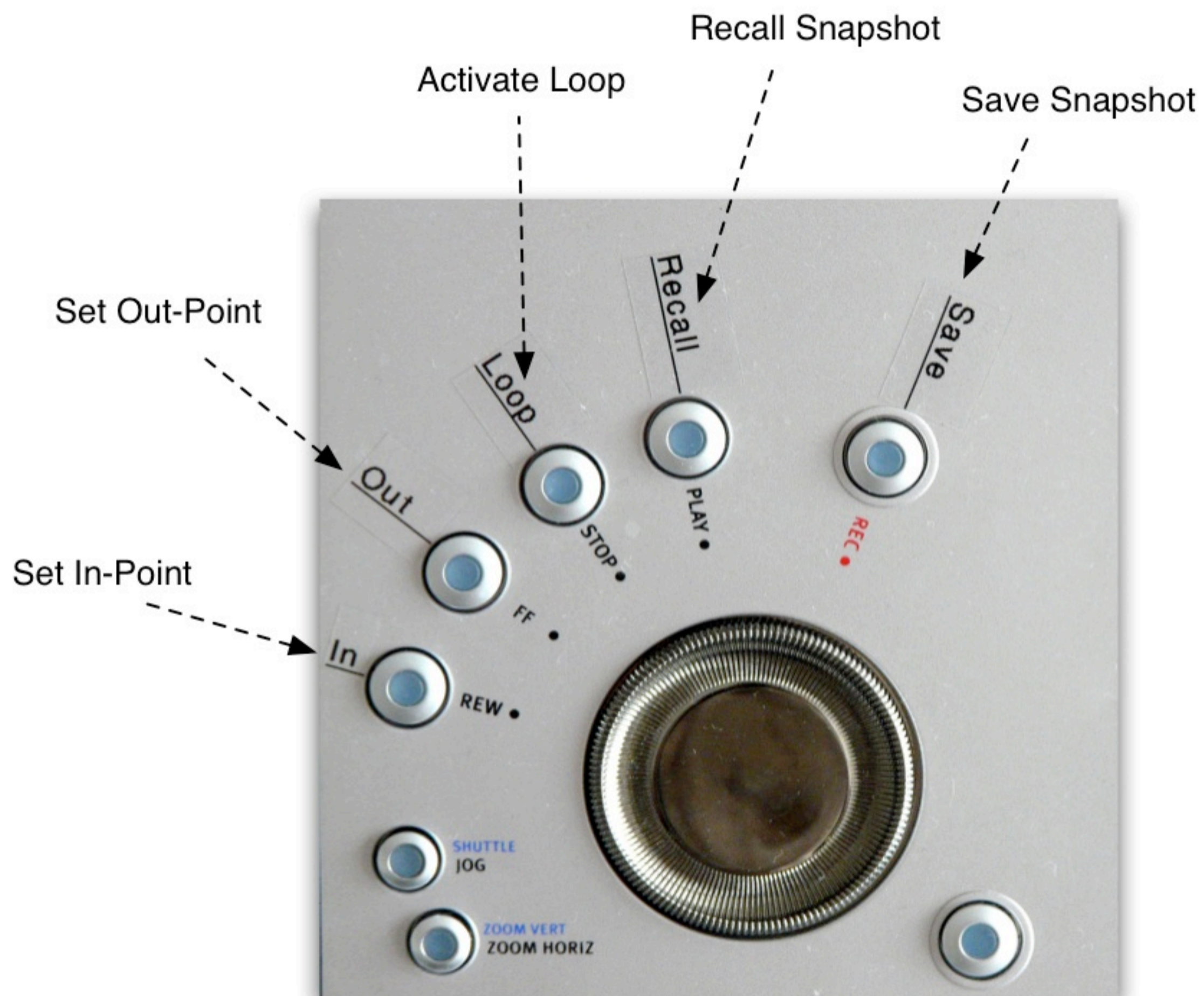
Knob Section



Euphonix SME



Jog-Wheel Section



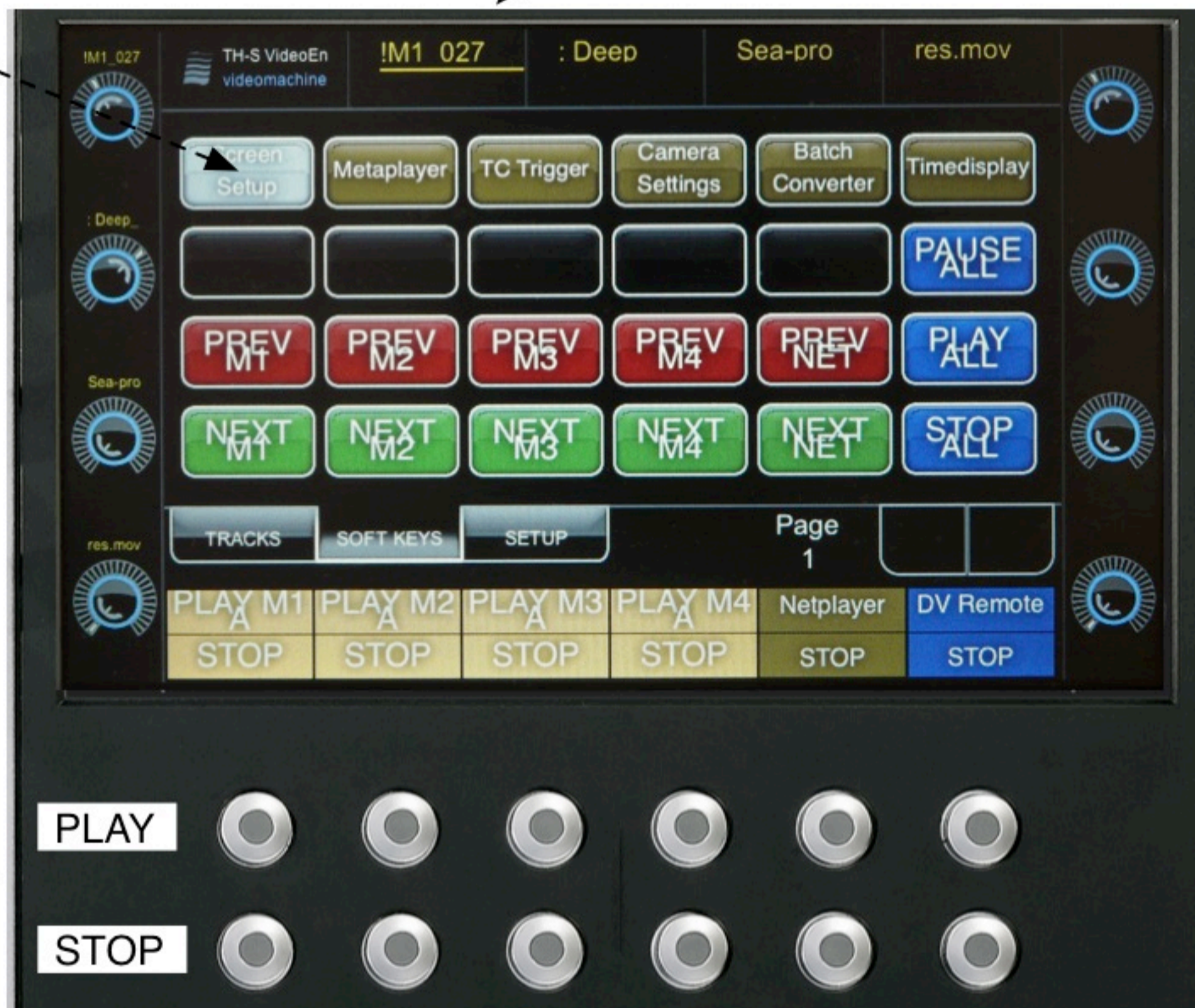
Select start/stop/loop points of the last selected Machine (layer A) via Jog-Wheel

Touch Screen Section

Shows current clip name of selected Machine (layer A).
The "!" character in front signals that looping is active for this clip.

The top row opens the corresponding window on the monitor.

Depending which layer was chosen these buttons trigger START/STOP for the respective layer.



With the Euphonix Editor one is able to define arbitrary key commands and pages to control TH-S VideoEngine3D. The default page is shown in this picture.