

Player Window

-> UPDATE <- --MATRIX-- PFL LINE IN 1/2 ON LOOP OFF	-> UPDATE <- Output 3/4 PFL LINE IN 3/4 OFF LOOP ON	-> UPDATE <- Output 5/6 PFL LINE IN 5/6 ON LOOP OFF	-> UPDATE <- Output 7/8 PFL LINE IN 7/8 OFF LOOP OFF	-> UPDATE <- Output 9-16 16ch LINK OFF LINE IN 1-8 OFF LOOP OFF	-> UPDATE <- Output 9-16 16ch LINK OFF LINE IN 9-16 OFF LOOP OFF	-> TOC <- ---MUTE--- LINE IN 17/18 OFF LOOP OFF
MUTE	005-Ohn...	Fliege	007-testfil...	005-Ohn...	CD 2 The...	CD-Track 1
AUTOCUE ON 00:00:00.0 Mono->L/R	AUTOCUE OFF 00:00:00.0 Mono->L/R	AUTOCUE ON 00:00:00.0 Mono->L/R	AUTOCUE ON 00:00:00.0 Mono->L/R	AUTOCUE ON 00:00:00.0 Channel MUX	AUTOCUE ON 00:00:00.0 Channel MUX	AUTOCUE ON 00:00:00.0

Audio-Matrix

M1		M2		M3		M4		M8a								M8b								
--MATRIX--		Output 3/4		Output 5/6		Output 7/8		Output 9-16								Output 9-16								
Out 1	ON OFF	Out 1	OFF OFF	Out 1	OFF OFF	Out 1	OFF OFF	Out 1	OFF	OFF	OFF	OFF	OFF	OFF	OFF	OFF	Out 1	OFF	OFF	OFF	OFF	OFF	OFF	OFF
Out 2	OFF ON	Out 2	OFF OFF	Out 2	OFF OFF	Out 2	OFF OFF	Out 2	OFF	OFF	OFF	OFF	OFF	OFF	OFF	OFF	Out 2	OFF	OFF	OFF	OFF	OFF	OFF	OFF
Out 3	OFF OFF	Out 3	ON OFF	Out 3	OFF OFF	Out 3	OFF OFF	Out 3	OFF	OFF	OFF	OFF	OFF	OFF	OFF	OFF	Out 3	OFF	OFF	OFF	OFF	OFF	OFF	OFF
Out 4	OFF OFF	Out 4	OFF ON	Out 4	OFF OFF	Out 4	OFF OFF	Out 4	OFF	OFF	OFF	OFF	OFF	OFF	OFF	OFF	Out 4	OFF	OFF	OFF	OFF	OFF	OFF	OFF
Out 5	OFF OFF	Out 5	OFF OFF	Out 5	ON OFF	Out 5	OFF OFF	Out 5	OFF	OFF	OFF	OFF	OFF	OFF	OFF	OFF	Out 5	OFF	OFF	OFF	OFF	OFF	OFF	OFF
Out 6	OFF OFF	Out 6	OFF OFF	Out 6	OFF ON	Out 6	OFF OFF	Out 6	OFF	OFF	OFF	OFF	OFF	OFF	OFF	OFF	Out 6	OFF	OFF	OFF	OFF	OFF	OFF	OFF
Out 7	OFF OFF	Out 7	OFF OFF	Out 7	OFF OFF	Out 7	OFF OFF	Out 7	ON	OFF	OFF	OFF	OFF	OFF	OFF	OFF	Out 7	OFF	OFF	OFF	OFF	OFF	OFF	OFF
Out 8	OFF OFF	Out 8	OFF OFF	Out 8	OFF OFF	Out 8	OFF OFF	Out 8	OFF ON	OFF	OFF	OFF	OFF	OFF	OFF	OFF	Out 8	OFF	OFF	OFF	OFF	OFF	OFF	OFF
Out 9	OFF OFF	Out 9	OFF OFF	Out 9	OFF OFF	Out 9	OFF OFF	Out 9	OFF OFF	ON	OFF	OFF	OFF	OFF	OFF	OFF	Out 9	ON	OFF	OFF	OFF	OFF	OFF	OFF
Out 10	OFF OFF	Out 10	OFF OFF	Out 10	OFF OFF	Out 10	OFF OFF	Out 10	OFF OFF	OFF ON	OFF	OFF	OFF	OFF	OFF	OFF	Out 10	OFF	ON	OFF	OFF	OFF	OFF	OFF
Out 11	OFF OFF	Out 11	OFF OFF	Out 11	OFF OFF	Out 11	OFF OFF	Out 11	OFF OFF	OFF OFF	ON	OFF	OFF	OFF	OFF	OFF	Out 11	OFF	OFF	ON	OFF	OFF	OFF	OFF
Out 12	OFF OFF	Out 12	OFF OFF	Out 12	OFF OFF	Out 12	OFF OFF	Out 12	OFF OFF	OFF OFF	OFF ON	OFF	OFF	OFF	OFF	OFF	Out 12	OFF	OFF	OFF	ON	OFF	OFF	OFF
Out 13	OFF OFF	Out 13	OFF OFF	Out 13	OFF OFF	Out 13	OFF OFF	Out 13	OFF OFF	OFF OFF	OFF OFF	ON	OFF	OFF	OFF	OFF	Out 13	OFF	OFF	OFF	OFF	ON	OFF	OFF
Out 14	OFF OFF	Out 14	OFF OFF	Out 14	OFF OFF	Out 14	OFF OFF	Out 14	OFF OFF	OFF OFF	OFF OFF	OFF ON	OFF	OFF	OFF	OFF	Out 14	OFF	OFF	OFF	OFF	OFF	ON	OFF
Out 15	OFF OFF	Out 15	OFF OFF	Out 15	OFF OFF	Out 15	OFF OFF	Out 15	OFF OFF	OFF OFF	OFF OFF	OFF OFF	ON	OFF	OFF	OFF	Out 15	OFF	OFF	OFF	OFF	OFF	OFF	ON
Out 16	OFF OFF	Out 16	OFF OFF	Out 16	OFF OFF	Out 16	OFF OFF	Out 16	OFF OFF	OFF OFF	OFF OFF	OFF OFF	OFF OFF	ON	OFF	OFF	Out 16	OFF	OFF	OFF	OFF	OFF	OFF	ON
Out 17	ON OFF	Out 17	OFF OFF	Out 17	OFF OFF	Out 17	OFF OFF	Out 17	OFF OFF	OFF OFF	OFF OFF	OFF OFF	OFF OFF	OFF OFF	OFF	OFF	Out 17	OFF	OFF	OFF	OFF	OFF	OFF	OFF
Out 18	OFF ON	Out 18	OFF OFF	Out 18	OFF OFF	Out 18	OFF OFF	Out 18	OFF OFF	OFF OFF	OFF OFF	OFF OFF	OFF OFF	OFF OFF	OFF	OFF	Out 18	OFF	OFF	OFF	OFF	OFF	OFF	OFF

Selecting "--MATRIX--" in the popup menus allows setting points manually

Save to: Snapshot 4

Shift Drag constrains value changes

Editor

Machine 1
CD 2 Thecutttt

Machine 2
005-OhneTitel ...

Machine 3
004-MUTE

Machine 4
007-testfile AL...

Machine 8a
005-OhneTitel ...

Machine 8b
CD 2 Thecutttt

Channel 1 1-8

Hold Shift Key to autocreate Breakpoints

UNDO

SELECT ALL

Shift Click to erase Breakpoints

00 : 00 : 46 . 5 -> 00 : 01 : 20 . 3 <- 00 : 02 : 06 . 9

Start Selection End

46585 ms 80320 ms 126905 ms

ON

00 : 01 : 50 . 3

0dB -> -120dB

5s FadeIn

00 : 01 : 22 . 7

Range 0 -> 1

Gain -20.

Faders&Meters

Current Samplerate 44.1kHz

-18.2

-5.7

-2.8

-23.

0.

-12.4

-44.5

127.

M1

M2

M3

M4

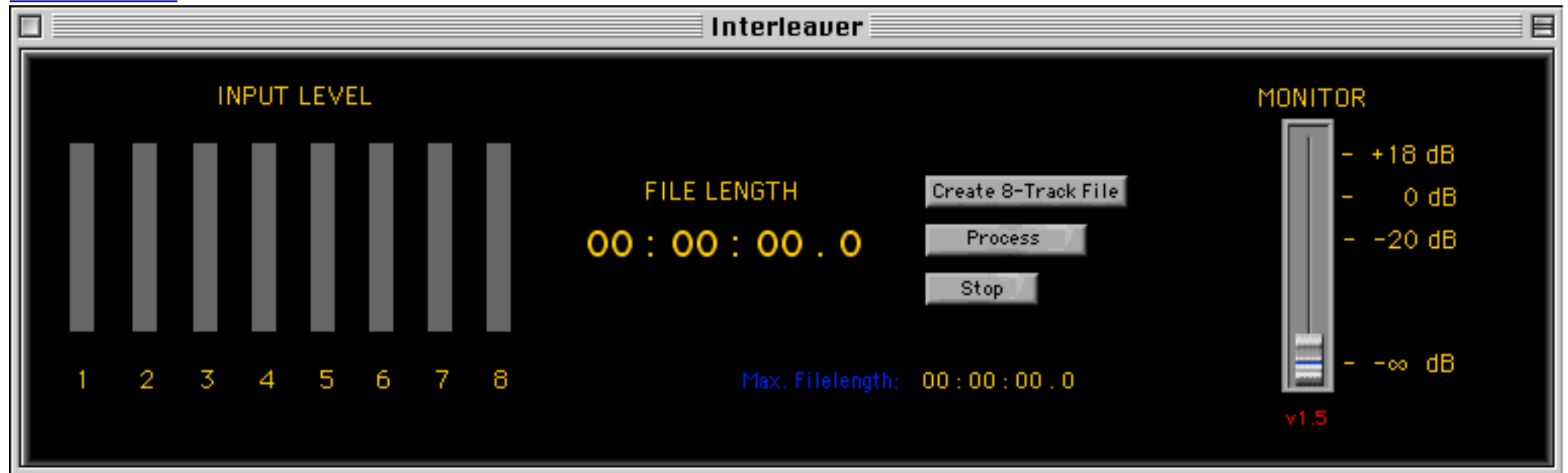
M8a

M8b

CD

MIDI

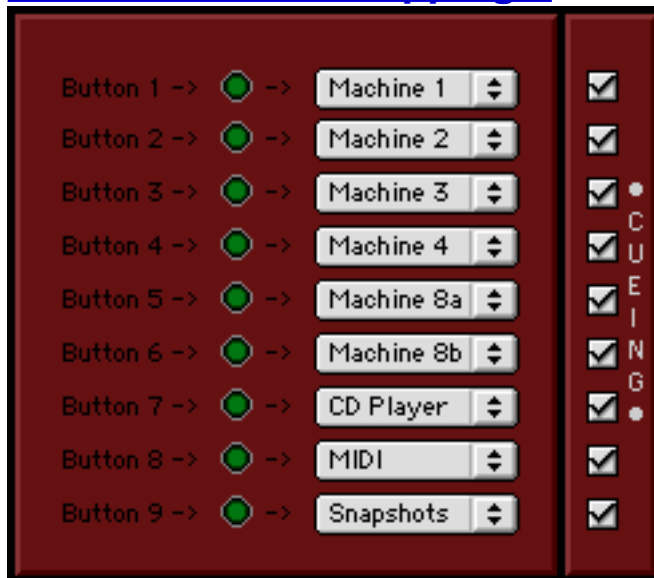
Interleaver



MIDI/USB Remote



USB PowerMate Mapping



Big Time Display



MotorMix Usage

